

The correct installation of Ruckstuhl carpets

1.	What is to be observed?	2
1.1	Control of the floor	2
1.2	Preparation of the subfloor	2
1.2.1	Preparation of cement subfloors	2
1.2.2	Preparation of poured asphalt subfloors	2
1.2.3	Preparation of absorbent calcium sulphate subfloors	3
1.2.4	Preparation of non-absorbent calcium sulphate subfloors	3
1.2.5	Preparation of magnesia subfloors	3
1.2.6	Preparation of bare concrete subfloors	3
1.2.7	Preparation of non absorbent wood underlays (or similar material)	3
1.3	Preparation of existing decorative flooring	4
1.3.1	Preparation of stone-floors and terrazzo-floors	4
1.3.2	Preparation of parquet	4
1.4	Acclimatization of the adhesive	4
1.5	Climate of the room	4
1.6	Observance of the general sales conditions	4
2.	General recommendations for the installation of carpets	5
2.1	Characteristics of the adhesives	5
2.1.1	Dispersion adhesive	5
2.1.2	Contact adhesive	5
2.2	Specifications of special adhesives	6
2.2.1	RAG-Koll K	6
2.2.2	Adhesive for seams	6
2.3	Recommended adhesives from other manufacturers	7
2.4	Installation diagram	8
2.5	Recommendations for the installation of Ruckstuhl carpets	9
A	Loose laying	9
B	Glue-down on underlay	10
C	Direct glue-down	13
D	Installation on stairs	15
E	Stretching	16
F	Tiles	19
3.	Installation of Ruckstuhl capets	21
3.1	Cutting Ruckstuhl carpets	21
3.2	Finishing of the articles Linteus, Step, One One and Flow	22
3.3	Laying the article Loft	23
	Examples of laying procedures	24

1. What is to be observed?

1.1 Control of the floor

The customer is responsible for the climate of the room. Existing decorative flooring should also be controlled before the installation of a textile floor covering. The floor should be securely bonded to the subfloor and be free of polish remnants.

1.2 Preparation of the subfloor

For the preparation of subfloors, the trowel is an important tool. The DIN 18365 'Preparation of floors', § 3.2.2. says: For floor coverings which are to be laid without underlay, the subfloor should be smoothed by patching; if the subfloor has bigger asperities, it must be levelled. The patching mass or levelling mass should be applied in such a way that it is strongly and permanently bound to the subfloor, that it does not crack and that it resists pressure.

1.2.1 Preparation of cement subfloors

Cement subfloors are generally absorbent grounds. Therefore, a bonding primer should be applied prior to patching. The bonding primer prevents the water of the patching mass from sinking too quickly. An epoxy resin primer, into which quartz sand is strewn, should be applied to damaged areas. Residual moisture max. 2% CM. If the cement subfloor is cracked, one should distinguish between two kinds. Small, narrow, superficial cracks can be filled with a patching mass, after thorough cleaning. Big cracks which traverse the whole thickness of the cement should be fixed. First, these shrinkage cracks should be widened on their whole length; then, transverse notches should be made every 10 - 15 cm/4 - 6 inches. (Be cautious with radiant heating!) Stabilizing clamps should be fixed into the notches and epoxy resin should be poured into all cracks and notches. In this way, the cement areas are strongly bonded to each other. Caution: Separation of buildings (dilatation cracks) are by no means to be bonded. Quartz sand should be strewn into the epoxy resin to ensure a perfect bond when patching.

1.2.2 Preparation of poured asphalt subfloors

Poured asphalt subfloors should be level and sealed and have a smooth surface, rubbed with sand. The surface should neither be wrinkled nor be enriched with bitumen. Poured asphalt subfloors should be patched directly, without the application of a primer. The only prerequisite is that the surface should have been sanded so that it can grip effectively. When selecting the patching material (plaster or cement), you should consult the manufacturer.

1.2.3 Preparation of calcium sulphate subfloors (previously: anhydrite subfloors)

It is important to remove the slop layer that develops from drying calcium sulphate

1 . What is to be observed?

subfloor. It can easily be done by abrading with coarse sand paper. It is indispensable to vacuum this dust thoroughly. As calcium sulphate subfloor is very absorbent, it is absolutely necessary to apply a bonding primer. If patching is necessary, a usual cementbound patching mass may be used. Residual moisture must be under 0.5% CM.

1.2.4 Preparation of non-absorbent calcium sulphate subfloors (previously anhydrite subfloors)

It is absolutely necessary to apply a bonding primer to the calcium sulphate subfloor. If patching is necessary, a usual cement-bound patching mass, may be used. Residual moisture under 0.5% CM.

1.2.5 Preparation of magnesia subfloors

An appropriate bonding primer should be applied to magnesia subfloors prior to patching with a cement-bound patching mass. Please observe the recommendations of the manufacturer of the bonding primer.

1.2.6 Preparation of bare concrete subfloors

If bare concrete subfloors are to be covered with textile floor coverings, they should be prepared according to § 1.2.1. Use an appropriate patching mass to make them even. Observe residual moisture and if necessary take alternative measures to ensure sealing.

1.2.7 Preparation of non-absorbent wood underlays (or similar material)

More and more, tongued and grooved boards are used. Whether they are screwed every 40 cm/16 in. on wooden floors or floating on dry rubble, they are a proper ground for the installation of textile floor coverings, if they have been properly installed. If patching is required, you should take advise from a technical specialist.

1.3 Preparation of existing decorative flooring

The existing decorative flooring must be carefully prepared depending on its nature and the kind of installation to be used.

1.3.1 Preparation of stone-floors and terrazzo-floors

An appropriate primer should be applied if these floors have to be smoothed by patching.

1. What is to be observed?

1.3.2 Preparation of parquet

Polish remnants should be removed. Loose slats should be fixed. If the parquet is not sealed, or if the coating is not intact, it is necessary that the parquet itself, and its bonding to the subfloor, not be damaged during treatment. If necessary, you should take advice from a technical specialist.

1.4 Acclimatization of the adhesive

Like the carpet, the adhesive should be acclimatized to the room climate. Please observe the instructions of the adhesive manufacturer.

1.5 Climate of the room

To obtain best results, air humidity in the room should be at least 40% to 60%. If air humidity is not sufficient, the natural fibres could wear more rapidly because they dry up. The floor temperature should be at least 15° and the air temperature at least 18° C.

1.6 Observance of the general sales conditions

Please observe in particular the following paragraphs of the general sales conditions:

Defective merchandise must be reported to us in writing within seven days of reception of the goods.

Exceptions to our liability: No complaints are recognised once the goods have been cut or partially installed; they are not recognised either if it is apparent that our instructions for laying and cleaning carpets have not been observed.

2 . General recommendations for the installation of carpets

2.1 Characteristics of the adhesives

In a general way, the recommendations of the manufacturer of the adhesives are to be observed.

2.1.1 Dispersion adhesive

Characteristics:	Dispersion adhesive, gives a strong bond. Easy to use, it is very low in emissions (EC 1, Giscode D1), suitable for castor-chairs in accordance with DIN 68131, and can be used on underfloor heating.
Range of application:	Carpets with secondary back/CottonBac
Airing time:	As specified by the manufacturer
Open time:	As specified by the manufacturer
Necessary quantity:	Trowel notch size A 2: approx. 250 - 300 g/m ² Trowel notch size B2: approx. 500 - 600 g/m ²
Traffic allowed:	After 24 hours
Special information:	<ul style="list-style-type: none">• Sensitive to frost• The manufacturer's recommendations are valid

2.1.2 Contact adhesive

Characteristics:	Solvent-based contact adhesive; it gives a strong bond. Traffic allowed at once. Can be used on underfloor heating.
Range of application:	Coir and sisal carpets with CottonBac, wool carpets on stairs and walls
Airing time:	approx. 15 minutes
Necessary quantity:	Brush A 0, approx. 250 g/m ² Trowel notch size A 3, approx. 300 - 400 g/m ²
Traffic allowed:	At once
Utilization:	Apply adhesive with the brush or with the roller on the subfloor and the back of the carpet. Ventilate until the adhesive is dry. Lay the carpet on the subfloor and press.
Special information:	<ul style="list-style-type: none">• Working temperature: not under 18° C / 64° F• Emanations - The room should be well ventilated• Toxicant, class 4 - Contains solvents• Inflammable• The manufacturer's specifications are valid• Please observe the requirements of the Hazardous Substance Ordinance.

2 . General recommendations for the installation of carpets

2.2 Specifications of special adhesives

2.2.1 RAG-Coll KK

Characteristics:	Transparent and fluid adhesive for sealing cut edges. Good adhesion, quick setting, easy to use. Inflammaglobe - Contains ketones. Emanations - The room should be well ventilated. Toxicant, class 4
Range of application:	Sealing the edges of the supporting fabric and of the cut edges of coir and sisal carpets. The adhesive is slightly visible after gluing.
Drying time:	Approx. 15 - 20 minutes by 20° C / 68° F
Necessary quantity:	1 liter per 15 - 25 m/16 - 27 yd, depending on the article
Traffic allowed:	At once after drying
Utilization:	Pour RAG-Coll K into a seam applicator bottle with a fine nozzle. Apply sparingly along the cut edges.
Available at:	Ruckstuhl
Container:	1 liter / 1.05 quart

2.2.2 Adhesive for seams

Characteristics:	Very good special dispersion adhesive for sealing cut edges . Free of solvents and aromatics. Easy to use, seals well, form a transparent film.
Range of application:	Sealing the edges of Linteus, Step, etc.
Drying time:	Approx. 15 - 20 minutes by 20° C / 68° F
Necessary quantity:	1 liter for 30 - 50 m/32.8 - 54.7 yd, depending on the article
Traffic allowed:	At once after drying
Utilization:	Pour adhesive into a special applicator bottle with a fine nozzle. Apply sparingly along the cut edges, in points resp. in a linear manner. After drying, adhesive residue may be removed carefully with the edge of a knife.
Special information:	<ul style="list-style-type: none">• Sensitive to frost• Free of toxicants and class of risk
Available at:	Ruckstuhl
Container:	200 ml/1 liter, 6.76 fl.oz/1.05 quart

2 . General recommendations for the installation of carpets

2.3 *Recommended adhesives from other manufacturers*

- UZIN
- Kiesel
- Wakol
- Wulff
- Mapei
- Collano
- AURO adhesive for carpets

If you have questions, ask directly the agents of the concerned manufacturer.

Personal notes:

2. General recommendations for the installation of carpets

2.4 Installation diagramme

Installation diagramme	products	loose laying	on underlay	direct glue-down	stairs	tiles	stretching	remarks
Coir/sisal suitable for stairs	Calicut, Jaipur, Manila	A	B	C	D	-	E*	* Stretching recommended only with reserve
Coir/sisal not suitable for stairs	Fresco, Mesh, Solid, Jaipolino, Net, Monochrome	A	B	C	-	-	E*	* Stretching recommended only with reserve
Coir tiles	Calicut, Tahiti	-	-	-	-	F	-	
Tufted carpets/woven carp. wool/hair yarns suitable for stairs	**Flatwool, Roller-wool/-color, Trap, Dito	A	B	C	D	-	E	** Stretching recommended only with reserve
Tufted carpets/woven carp. not suitable for stairs	Updown, Dry, Bilevel, Capra, Element, Più, Plain, Zand, Zoom, **Loft, **Rep, Chenille	A	B	C	-	-	E	** Stretching recommended only with reserve
Particularities	Linteus, Step, Flow, One One, Feltro	-	B	C	-	-	-	
Larsen	Collection Larsen	-	B	-	-	-	E	

2 . General recommendations for the installation of carpets

2.5 Recommendations for the installation of Ruckstuhl carpets

The different possibilities of installation mentioned in the chart are described on the following pages. Every letter, for ex. "A" means a certain operation which has been tested by Ruckstuhl's specialists and has been found good in practice.

A Loose laying of Ruckstuhl carpets

The textile floor covering is fixed nowhere on the subfloor or the underlay (except by the doors). For hardfibre carpets, loose laying is only recommended for rooms under 20 m²/215 sq.ft. Please, take into consideration that the carpets may shrink or form waves if the room climate is unfavourable. In this case, it is essential to make a full-area glue-down.

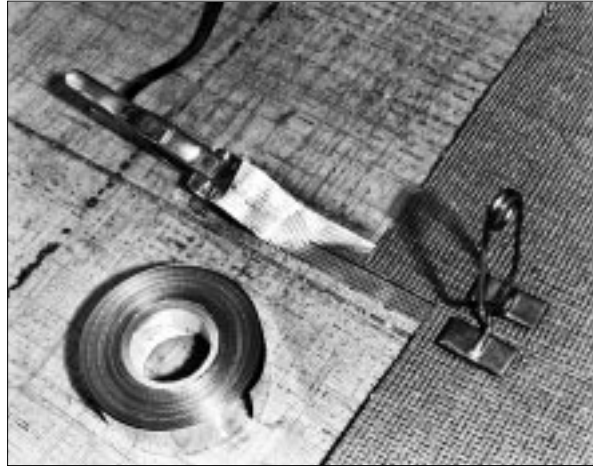


1) Cutting the selvedge

1. Before laying, carpet and adhesive must be acclimated for at least 48 hours!
2. Loose laying of hardfibre carpets only in small rooms (no warranty from the manufacturer).
3. Leave a space of 3-5 mm / 0.12-0.20 in. along the walls.
4. Cut the selvedge and seal, if necessary.
5. Join the widths together with electroseaming, for ex. with a SILVASEAM equipment. The utilization of a double-sided adhesive tape is not sufficient for hardfibre carpets.
6. Front seaming should be avoided.

2 . General recommendations for the installation of carpets

Caution: For the products Linteus, Step, Lantos, Loft etc. , it is essential to observe the instructions given under item 3!



2) Electroseaming of the carpet widths with a SILVASEAM equipment

B The professional glue-down of Ruckstuhl carpets on underlay

You should consult a technical specialist on the suitability of the underlay to be used. Full-area gluing of the underlay on ready-to-be-laid, clean, smooth, dry and absorbent subfloor.

Recommended adhesives: dispersion adhesive. For other adhesives, see under § 2.3 "Recommended adhesives from other manufacturers".

Minimum working temperature: 15° C / 59° F.

If carpets with CottonBac are glued on underlay, they are not suitable for castor chairs.

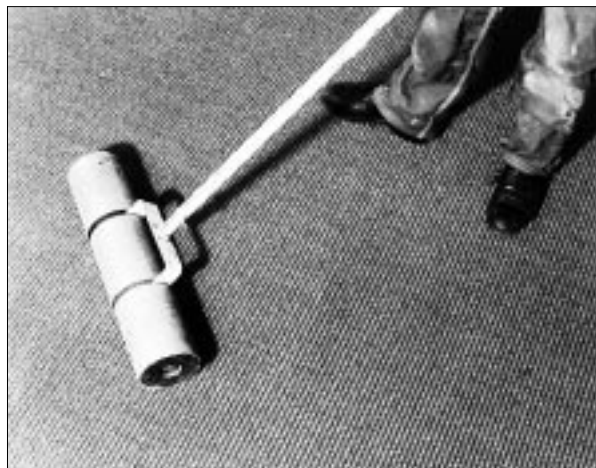
1. Before laying, carpet and adhesive must be acclimated for at least 48 hours!



3) Glue down the widths at right angles with the padding

2 . General recommendations for the installation of carpets

2. Place the padding on the ground at right angles with the carpet.
3. Glue the padding on the subfloor on the whole surface.
4. Roll the padding with a carpet roller and cut along the walls.
5. Place the widths facing the window.
6. Unfold the widths and line them up; match the patterns, if necessary.
7. Cut the selvages; seal, if necessary.
8. Draw a pencil line on the padding, about 1 cm / 0.4 in. over the edge.
9. Roll up the width and spread the adhesive uniformly over the padding with a trowel.



4) Roll the carpet with the carpet roller

10. Ventilate in accordance with manufacturer's instructions. Lay the width into the wet adhesive.
11. Roll down the width crosswise, press with the carpet roller. Lift the carpet partially again to control if enough glue adheres to the carpet. The carpet back should show a regular adhesive coating.
12. Unfold the width back into the glue bed and press with the carpet roller. The necessary quantity of adhesive is now known.
13. Unfold the next width. Draw a pencil line. Place the width, its edge overlapping the edge of the already laid width by 1 - 2 threads.

2 . General recommendations for the installation of carpets



5) The next widths should overlap by 1 - 2 threads

14. Roll up the second width. Spread the adhesive uniformly. Ventilate in accordance with instructions. Unfold the carpet and roll it with the carpet roller.
15. Lift the overlapping part with the awl and press it against the end already laid. Caution: the carpet should not come into touch with the adhesive.
16. The resulting wave should be flattened at once with the carpet roller. It is possible to treat the cut edge (seam) with the kneekicker or the hammer to make a better fitting. Be cautious: You should not make marks with the hammer on hardfibre carpets. One hour later, press the carpet again with the carpet roller and check your work.
17. With the stair iron, knock down the carpet into the angle between floor and wall. When the glue has set, trim along the walls. knock down protruding ends with the stair iron.
18. Front seams are to be avoided.
19. In accordance with today's state of the art methods, the finishing of the seam with Silvaseam or Speedseam is the recommended procedure.

Caution: For the products Linteus, Step, One One, Flow, Loft etc. it is essential to observe the instructions given under item 3!

Product Flatwool:

Please note that this quality should not be cut along the lath, but along the thread. With the design "Stripe" observe the succession of the colours (dark/clear/dark/clear, etc.), when cutting the widths.

2 . General recommendations for the installation of carpets

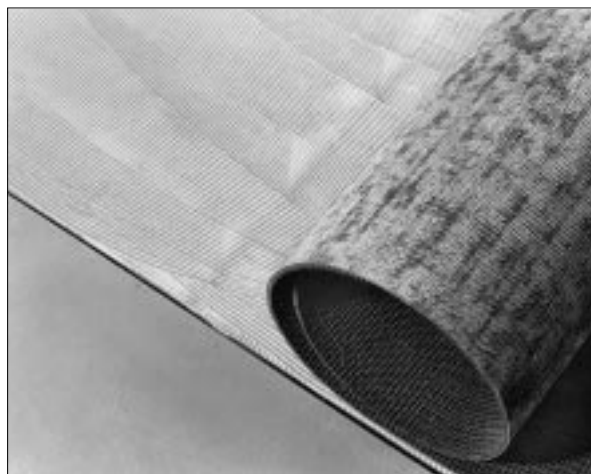
C The professional direct glue-down of Ruckstuhl carpets

Full-area glue-down on ready-to-be-laid, clean, smooth, dry and absorbent subfloors.

Recommended adhesives: synthetic resin dispersion adhesive. For other adhesives, see under § 2.3 "Recommended adhesives from other manufacturers".

Minimum working temperature: 15° C / 59° F.

1. Before laying, carpet and adhesive must be acclimated for at least 48 hours.
2. Place the widths facin the window.
3. Unfold the widths and line them up; match the pattern, if necessary.
4. Cut the selvages; seal, if necessary.
5. Draw a pencil line on the subfloor, about 1 - 2 cm / 0.4 - 0.8 in. over the edge.



6) Spread the adhesive uniformly

6. Roll up the width and spread the adhesive uniformly over the subfloor with a trowel.
7. Lay the carpet width by width, spread the adhesive up to the pencil line.
8. Ventilate in accordance with manufacturer's instructions. Lay the width into the wet adhesive. If widths are long, start in the middle.
9. Roll down the width crosswise, press with the carpet roller. Lift the carpet partially again to control if enough glue adheres to the carpet. The carpet back should show a regular adhesive coating. If this is not the case, add some glue, but not too much.
10. Unfold the width back into the glue bed and press with the carpet roller. The necessary quantity of adhesive is now known.

2 . General recommendations for the installation of carpets

11. Unfold the next width. Draw a pencil line. Place the width, its edge overlapping the edge of the already laid width by 1 - 2 threads.



7) Press the overlapping part

12. Roll up the second width. Spread the adhesive uniformly. Ventilate in accordance with instructions. Unfold the carpet and roll it with the carpet roller.
13. Lift the overlapping part with the awl and press it against the end already laid. Caution: the carpet should not come into touch with the adhesive.
14. The resulting wave should be flattened at once with the carpet roller. It is possible to treat the cut edge (seam) with the kneekicker or the hammer to make a better fitting. Be cautious: You should not make marks with the hammer on hardfibre carpets. One hour later, press the carpet again with the carpet roller and check your work.
15. Alternative procedure: insert both cut edges in the gluing bed, press together with a two-headed tension tool and fix in place with seam clamps.
16. With the stair iron, knock down the carpet into the angle between floor and wall. When the glue has set, trim along the walls. Knock down protruding ends with the stair iron.
17. Front seams are to be avoided.



8) Knock down the carpet into the angle between floor and wall

2 . General recommendations for the installation of carpets

Caution: For the products Linteus, Step etc., it is essential to observe the instructions given under item 3!

Product Flatwool:

Please note that this quality should not be cut along the lath, but along the tread. With design "Stripe" observe the succession of the colours (dark/clear/dark/clear, etc.) when cutting the widths.

D Installation of carpets on stairs

The front edge of the steps should be rounded (2.5 cm / 1 in. radius). You may lay a felt or rubber padding under the carpet. This makes the carpet more durable.

Recommended adhesive: a contact adhesive. For other adhesives, see under § 2.3. "Recommended adhesives from other manufacturers".

Minimum working temperature: 15° C / 59° F.

1. Before laying, carpet and adhesive must be acclimated for at least 48 hours.
2. Cut the carpet somewhat larger than the stairs.
3. Always start carpeting from the bottom of the stairs. Apply adhesive on the stairs and on CottonBac with the lambskin roller. Ventilate in accordance with instructions.
4. Start under the first step and work to the top. Make sure that the carpet threads are straight along the edge of the step.
5. Fix the carpet on the next step, step/wall/front with the stair iron. Cut and press down the edge of the carpet with the stair iron.
6. In the case of spiral stairs, work with a template. The carpet must always be laid straight along the front edge of the step. If a side is open, the steps should be finished.

Caution:

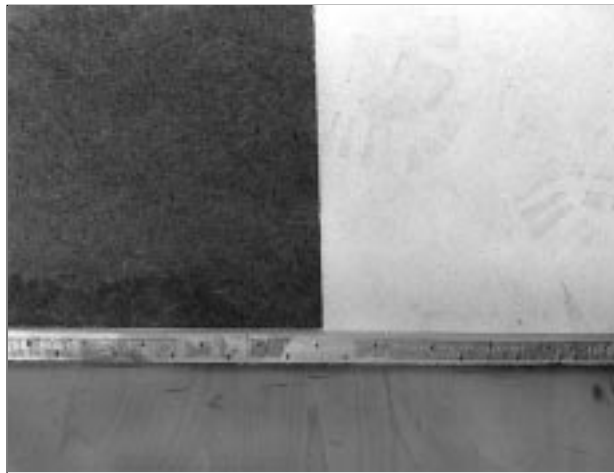
Contact adhesive = toxicant class 4 / Inflammable / Emanations, the room should be well ventilated.

2 . General recommendations for the installation of carpets

E Stretching

If a carpet with CottonBac is stretched, it is not suitable for castor chairs.

If a carpet with CottonBac must be seamed by welding, it is necessary to remove the CottonBac on 1.5 cm / 0.6 in. along the edges before welding, in order to have the tension on the carpet and not on the CottonBac.



9) Fixed gripper

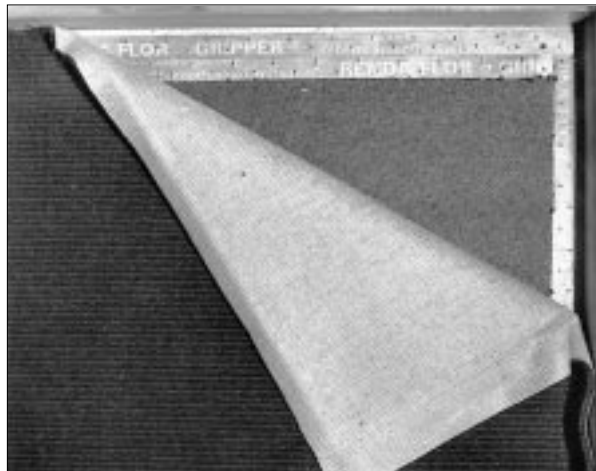
1. Before laying, carpet and adhesive must be acclimated for at least 48 hours!
2. Prepare the subfloor for installation.
3. Fix the grippers.
4. Place the padding on the subfloor at right angles with the seams of the textile floor covering.
5. Spread the carpet widths; they should face the main window front.
6. Match the patterns.
7. Seal the cut edges. This must be done very carefully, especially for Wilton carpets. Important: It is advisable to start in the middle of the room to adjust pattern variations. It is possible that the pattern cannot be perfectly matched.

2 . General recommendations for the installation of carpets

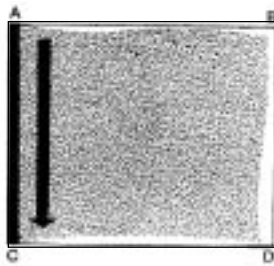
8. The widths should be seamed together by sewing or welding, for ex. with a SILVASEAM equipment. Be cautious: When welding, make sure that the heat does not change the colour of the carpet surface and that the patterns are matched.
9. Spread the carpet and cut it to the approximative dimensions of the room.
10. Stretch the carpet with a carpet stretcher. The main tension must be in the seam direction (lengthwise or as manufactured). The stretching diagram shows in which succession the sides must be stretched.

Personal notes :

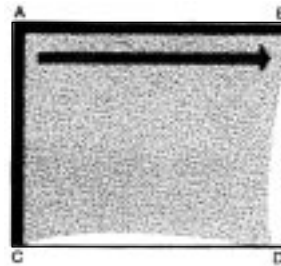
2 . General recommendations for the installation of carpets



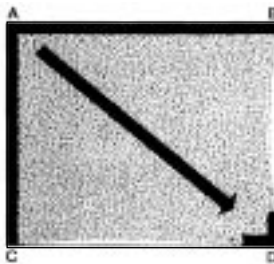
10) Before stretching on gripper and padding



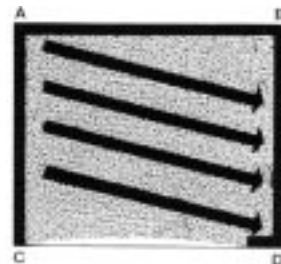
1. Corner A is hooked on, the carpet is stretched to C and hooked on along side A-C.



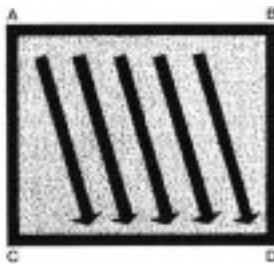
2. Stretch from A to B and hook on side A-B



3. Stretch diagonally from A to D and hook on at D



4. Stretch from wall A-B towards wall B-D, at the same time correcting corner D



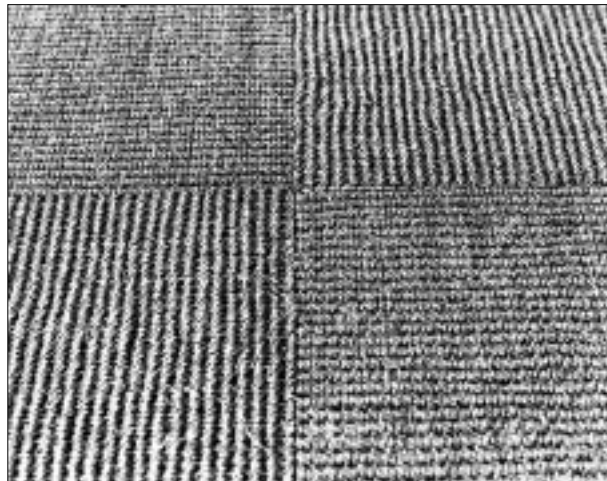
5. Stretch from wall A-B towards wall C-D and hook on

2 . General recommendations for the installation of carpets

F Installation of Ruckstuhl carpet tiles

a) Coir tiles "Calicut

1. Using a chalk line or laths, determine exactly where the tiles are to be laid in the room, and in which direction. They can be laid chessboard fashion or offset half a width.



11) Tiles laid chessboard fashion

2. Do not begin at the wall; the middle of the room is best.
3. Lay one or two rows, press the tiles on the subfloor with laths and fix them with nails or plasticizer-resistant adhesive tape.
4. Lay three to four rows of tiles, press them with laths and hammer.
5. Cut to size immediately and press the tiles firmly together, so that they bulge up slightly during laying. The best manner to trim the tiles is to mark and cut them on the reverse side, with a piece of soft wood underneath. Trapezoidal blade, angle square and straightedge are indispensable.
6. Full-surface gluing is not necessary. Partial gluing is advisable in large rooms over 20 m²/216 sq.ft. or a light adhesive (stop layer) to prevent slipping should be rolled on over the whole area.
7. It is not possible to roll movables on tiles which have been loosely laid.

2 . General recommendations for the installation of carpets

b) Wool tiles "Rollertile"

1. Before laying, tiles and adhesive must be acclimated for at least 48 hours.
2. Installation on ready-to-be-laid, clean, smooth, dry and absorbent subfloor.
3. Recommended adhesive: UZIN U 1000. For the stop layer you should ask the adhesive manufacturer about suitable laying techniques.
4. Minimum workin temperature on the ground: 15° C / 59° F.
5. Using a chalk line or laths, determine exactly where the tiles are to be laid in the room, and in which direction.
6. Do not begin at the wall; the middle of the room is the best.
7. For areas over 20 m2 / 15 sq.ft. gluing or a stop layer is recommended.
8. To the contrary of point 7, full-surface gluing (according to adheisve manufacturer's instructions) is necessary at places of work where castor chairs are used.
9. Apply adhesive with a mohair roller or a finely notched trowel.

3. The installation of Ruckstuhl carpets

3.1 Cutting Ruckstuhl carpets

The following recommendations for cutting Ruckstuhl carpets will be useful to you. But the carpet fitter has the final responsibility for professional cutting.

Trapezoidal blade:

- With a trapezoidal blade, along a lath, beginning at the top.
 - Plain, Jaipolino, Jaipur, Calicut, Manila, Solid, Net Dry, Flatwool, Rollerwool, Rollercolor, Loft, Feltro basic and color
- With a trapezoidal blade, along a lath, on the reverse side of the carpet.
 - Porta
- Before cutting, apply :PUR adhesive for seams along a lath. Cut with a trapezoidal blade, beginning at the top.
 - Capra, Element, Monochrome, Colombo Due

Scissors / Carpet cutter:

- Along the lane between sections, with scissors or a carpet cutter
 - Trap, Chenille
- Along the warp thread, with scissors or a carpet cutter.
 - Dito, Updown, Mesh, Rep
- Before cutting, apply :PUR adhesive for seams along a lath. Cut with scissors or a carpet cutter.
 - Step, Linteus, Fresco, One One, Flow, Lantos, Ombra
- From top to bottom with scissors or a carpet cutter.
 - Get up, Zand, Bilevel

Hooked blade:

- Along the warp thread or ruler, with a hooked blade, on the reverse side of the carpet.
 - Zoom, Più, Pinn

3. The installation of Ruckstuhl carpets

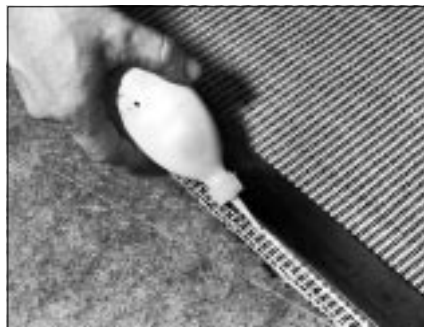
3.2 Finishing of the articles *Linteus*, *Step*, *One One*, *Flow*

Some articles are woven in a multiweft construction, resp. with a cotton weft. During finishing, certain threads may stand up where the carpet has been cut; this may result in a complaint. The adhesive for seams - an excellent dispersion adhesive, free of solvents and aromatics - has been created especially for the sealing of cut edges.



12) Adhesives for seams from Ruckstuhl, available in containers of 200 ml and 1 liter

Apply adhesive for seams sparingly along the cut edges, one warp thread wide. After drying, adhesive residue can be removed carefully with the edge of a knife



13) Apply :PUR adhesive for seams from Ruckstuhl very sparingly in a linear manner along a lath

Linteus: Before cutting, apply adhesive on the black warp thread, one thread wide, beginning at the top, and let to dry. Cut carefully with scissors or trapezoidal blade on the edge of the black warp cotton thread. Important: The white cotton weft thread must be bound by the black warp thread so that it cannot stand up. Care must be taken to achieve a precise rapport.

Flow, One One: Before cutting, apply adhesive for seams on edges to be cut, one thread wide, beginning at the top, and let to dry. Cut carefully with scissors or a carpet cutter between the warp threads. Important: The weft thread should not stand up.

Step: Before cutting, apply adhesive on edges to be cut, one thread wide, beginning at the top, and let to dry. Cut carefully with scissors in the middle of the four warp threads in the uni stripe. Important: It is advisable to begin in the middle of the room to match the pattern. It is possible that the pattern cannot be perfectly adjusted.

3. The installation of Ruckstuhl carpets

3.3 Advice on laying for the Loft product

1. The undersurface must be thoroughly prepared before laying. All the technical requirements relating to laying must be complied with. Particular care must be given to the levelling of the surfaces to be worked, which must be smoothed and filled twice over, or else a self-equalising system should be used.
2. The carpet rolls must be laid out on the prepared floor at least 48 hours before any further work is done, to allow them to acclimatise.
3. Seam to be cut with a trapezoid blade (each seam to be cut separately, no double cutting).
4. After this the rolls of carpet should be pulled back, and adhesive applied to the surface in keeping with the adhesive manufacturer's instructions, to a width of about 1 metre in the area of the seam (around 50 centimetres per roll). Be sure to leave the prescribed time interval for ventilation, until the adhesive has dried completely.
5. The two cut edges (seam) must be laid together for pressing with the two-headed tensor, and then fixed at intervals of about 15 cm with seam clamps. After the adhesive has bonded (around 2 hours after laying), the clamps can be removed.
6. Only now should the rest of the carpet be laid.
7. Alternative: Insert roll to seam, roll surface, roll seam.
8. Once laid, the carpet should however not be exposed to any kind of stress until the adhesive has thoroughly bonded (depending on the type of adhesive used, this may be from 24 to 48 hours after laying).
9. When laying on an underlay, the seam is to be worked as follows: Seam cut as above, but seam to be cut to size with Speedseam/Silvaseam. Do not use seam irons!
10. We recommend the following adhesive:
UZIN UZ 88 Ökoline, amount required 250-300 g/m², toothing A1, or 300-350 g/m², toothing A2 (according to underlay). Prior to planning and carrying out the work, please obtain instructions for use from the UZIN company.

3. The installation of Ruckstuhl carpets



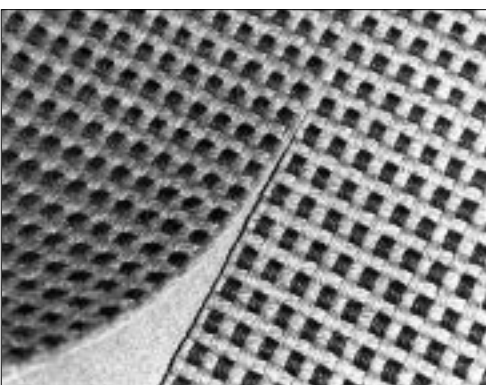
Example, operation 1
Before cutting, apply :PUR adhesive for seams very sparingly on all edges to be cut, along a lath, or along a repeat, as a fine line, beginning at the top.



Example, operation 2
With a finger, rub the adhesive carefully into the thread and let to dry.



Example, operation 3
Cut in the middle of the four warp threads in the uni stripe.



Example, operation 4
Important: It is advisable to begin in the middle of the room to match the pattern. It is possible that the pattern cannot be perfectly adjusted.