



Jaipur 10224

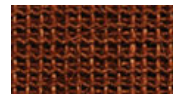
Jaipur

Design	Ruckstuhl (1972)
Suggested application	Residential: area rug Residential: wall to wall Light contract: conference Light contract: lobby Light contract: lounge
Surface	sisal
Composition	100% sisal
Backing	CottonBac
Width of rolls (cm, ft.)	approx. 200, 6'7", cut selvedge
Length of rolls (m, ft.)	approx. 30, 98'3"
Area rugs (cm, inch)	of your choice
Repeat (cm, inch)	-
Pile weight (g/m ² ,oz./sq.yd.)	approx. 1900, 56
Total weight (g/m ² ,oz./sq.yd.)	approx. 2900, 86
Total height (mm, inch)	approx. 6, 0.24"
Thermal resistance (m ² K/W)	< 0.17
Burning class	EFL

Colors



Jaipur 20368 caramel



Jaipur 10224 orange



Jaipur 20022 natural



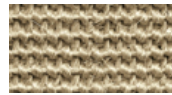
Jaipur 40160 linden



Jaipur 20342 brown



Jaipur 60015 slate



Jaipur 20343 sand



Jaipur 60196 onyx