



Trap 240

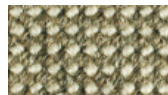
Trap

Design	Ruckstuhl (1995)
Suggested application	Residential: area rug Residential: wall to wall Light contract: conference Light contract: lobby Light contract: lounge Contract: restaurant / hotel Contract: passage
Surface	hair yarn, pure new wool
Composition	35% hair yarn, 27% pure new wool, 20% yute, 10% PP, 8% cotton
Backing	latex coating
Width of rolls (cm, ft.)	approx. 400, 13'2", blank selvedge
Length of rolls (m, ft.)	approx. 25, 82'
Area rugs (cm, inch)	of your choice
Repeat (cm, inch)	-
Pile weight (g/m ² ,oz./sq.yd.)	approx. 1380, 41
Total weight (g/m ² ,oz./sq.yd.)	approx. 2400, 71
Total height (mm, inch)	approx. 6, 0.24"
Thermal resistance (m ² K/W)	< 0.17
Burning class	BFL-S1

Colors



Trap 240



Trap 283